



PAMIBIA UNIVERSITY
OF SCIENCE AND TECHNOLOGY

FACULTY OF HEALTH, NATURAL RESOURCES AND APPLIED SCIENCES

DEPARTMENT OF MATHEMATICS AND STATISTICS

QUALIFICATION: Bachelor of science in Applied Mathematics and Statistics	
QUALIFICATION CODE: 07BSAM	LEVEL: 7
COURSE CODE: RAA602S	COURSE NAME: REGRESSION ANALYSIS AND ANALYSIS OF VARIENCE
SESSION: JANUARY 2023	PAPER: THEORY
DURATION: 3 HOURS	MARKS: 100

SUPPLEMENTARY / SECOND OPPORTUNITY EXAMINATION QUESTION PAPER	
EXAMINER	Mr SP. KASHIHALWA
MODERATOR:	Prof R KUMAR

INSTRUCTIONS
<ol style="list-style-type: none">1. Answer ALL the questions in the booklet provided.2. Show clearly all the steps used in the calculations.3. All written work must be done in blue or black ink and sketches must be done in pencil.

PERMISSIBLE MATERIALS

1. Non-programmable calculator without a cover.
2. Attached statistical tables(t-table and F-table)

THIS QUESTION PAPER CONSISTS OF 4 PAGES (Including this front page)

Question 1 [23]

James obtains cash from ATM. He suspects that the rate at which he spends cash is affected by the amount of the cash he withdrew at his previous visit to an ATM. To investigate this he deliberately varies the amount he withdraws. He records, for each visit to an ATM, the amount, N\$ withdrawn and the number of hours, until his next visit to an ATM.

Withdrawal	1	2	3	4	5	6	7	8	9	10
x	40	10	100	110	120	150	20	90	80	130
y	56	62	195	330	94	270	48	196	214	286

- 1.1 Calculate the equation of the regression line for these data [6]
- 1.2 James made one withdrawal immediately before going on a weekend visit to Swakopmund. Identify the most likely withdrawal, giving a reason [3]
- 1.3 Following another withdrawal, James was confined to bed for several days with COVID-19. Identify the most likely withdrawal, giving a reason [3]
- 1.4 Interpret, in context, the gradient of the regression line. [2]
- 1.5 Comment on the evidence, if any, that James's rate of spending cash is affected by the amount he withdraws [3]
- 1.6 Calculate the coefficient of correlation and interpret your answer [6]

Question 2 [26]

The following table shows the hours of sunshine during nine days in August and the number of ice cream sold by a beach shop in Swakopmund is of the form $Y = ae^{bx}$.

Sunshine	4.3	6.9	0	10.4	5.2	1.8	8	9.2	2.1
Ice cream	224	208	123	419	230	184	362	351	196

- 2.1 Calculate the equation of the regression line and interpret it [13]
- 2.2 Test at $\alpha = 0.05$ if there is a significant relationship between Sunshine and the number of ice cream [13]

Question 3 [33]

	Dependent variable:Wage			
	Method: Least square			
	Date: 15 /09/22 Time: 15h00			
	Sample: 1526			
Variable	coefficients	Std. Error	t-statistics	Prob
C	0.751212	-2.383697	0.0175
EDUC	0.051656	11.29246	0.000
EXP	0.011055	5.03528	0.000
FEMALE	0.272208	-7.593839	0.000
MARRIED	0.296851	2.22415	0.0266
R-squared	0.33158	Akaike info criterion		5.088405
F-Statistics	60.11832	Schwarz criterion		5.12895
Prob(F-statistic)	0	Hanna-Quinn Criterion		5.10428
Adjusted R-squared	0.310547	DW stat		1.807244

- 3.1 Estimate/fill in the missing values of each coefficients [10]
- 3.2 Write down the estimated equations from the above model (2 decimal places) [6]
- 3.3 Interpret the coefficient of determination [2]
- 3.4 Comment on the value of the DW statistics [2]
- 3.5 State the hypothesis for the F-test and it is decision rule [3]
- 3.6 interpret the results of the F-test in one sentence [2]
- 3.7 Interpret the coefficients of all exogenous variable [8]

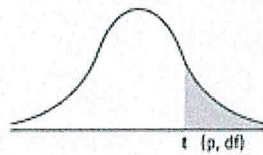
Question 4 [18]

Consider the following model $Y = \beta_0 + \beta_1x_1 + \beta_2x_2 + \beta_3x_3 + \beta_4x_4 + \varepsilon$

4.1 List three methods you will use to do variable selection [6]

4.2 Use the above model and clearly indicates all the steps for Forward Stepwise Selection [12]

Numbers in each row of the table are values on a t -distribution with (df) degrees of freedom for selected right-tail (greater-than) probabilities (p).



df/p	0.40	0.25	0.10	0.05	0.025	0.01	0.005	0.0005
1	0.324920	1.000000	3.077684	6.313752	12.70620	31.82052	63.65674	636.6192
2	0.288675	0.816497	1.885618	2.919986	4.30265	6.96456	9.92484	31.5991
3	0.276671	0.764892	1.637744	2.353363	3.18245	4.54070	5.84091	12.9240
4	0.270722	0.740697	1.533206	2.131847	2.77645	3.74695	4.60409	8.6103
5	0.267181	0.726687	1.475884	2.015048	2.57058	3.36493	4.03214	6.8688
6	0.264835	0.717558	1.439756	1.943180	2.44691	3.14267	3.70743	5.9588
7	0.263167	0.711142	1.414924	1.894579	2.36462	2.99795	3.49948	5.4079
8	0.261921	0.706387	1.396815	1.859548	2.30600	2.89646	3.35539	5.0413
9	0.260955	0.702722	1.383029	1.833113	2.26216	2.82144	3.24984	4.7809
10	0.260185	0.699812	1.372184	1.812461	2.22814	2.76377	3.16927	4.5869
11	0.259556	0.697445	1.363430	1.795885	2.20099	2.71808	3.10581	4.4370
12	0.259033	0.695483	1.356217	1.782288	2.17881	2.68100	3.05454	4.3178
13	0.258591	0.693829	1.350171	1.770933	2.16037	2.65031	3.01228	4.2208
14	0.258213	0.692417	1.345030	1.761310	2.14479	2.62449	2.97684	4.1405
15	0.257885	0.691197	1.340606	1.753050	2.13145	2.60248	2.94671	4.0728
16	0.257599	0.690132	1.336757	1.745884	2.11991	2.58349	2.92078	4.0150
17	0.257347	0.689195	1.333379	1.739607	2.10982	2.56693	2.89823	3.9651
18	0.257123	0.688364	1.330391	1.734064	2.10092	2.55238	2.87844	3.9216
19	0.256923	0.687621	1.327728	1.729133	2.09302	2.53948	2.86093	3.8834
20	0.256743	0.686954	1.325341	1.724718	2.08596	2.52798	2.84534	3.8495
21	0.256580	0.686352	1.323188	1.720743	2.07961	2.51765	2.83136	3.8193
22	0.256432	0.685805	1.321237	1.717144	2.07387	2.50832	2.81876	3.7921
23	0.256297	0.685306	1.319460	1.713872	2.06866	2.49987	2.80734	3.7676
24	0.256173	0.684850	1.317836	1.710882	2.06390	2.49216	2.79694	3.7454
25	0.256060	0.684430	1.316345	1.708141	2.05954	2.48511	2.78744	3.7251
26	0.255955	0.684043	1.314972	1.705618	2.05553	2.47863	2.77871	3.7066
27	0.255858	0.683685	1.313703	1.703288	2.05183	2.47266	2.77068	3.6896
28	0.255768	0.683353	1.312527	1.701131	2.04841	2.46714	2.76326	3.6739
29	0.255684	0.683044	1.311434	1.699127	2.04523	2.46202	2.75639	3.6594
30	0.255605	0.682756	1.310415	1.697261	2.04227	2.45726	2.75000	3.6460
z	0.253347	0.674490	1.281552	1.644854	1.95996	2.32635	2.57583	3.2905
CI	————	————	80%	90%	95%	98%	99%	99.9%

Critical Values of the F -Distribution: $\alpha = 0.05$

Denom. d.f.	Numerator Degrees of Freedom									
	1	2	3	4	5	6	7	8	9	10
1	161.448	199.500	215.707	224.583	230.162	233.986	236.768	238.883	240.543	241.882
2	18.513	19.000	19.164	19.247	19.296	19.330	19.353	19.371	19.385	19.396
3	10.128	9.552	9.277	9.117	9.013	8.941	8.887	8.845	8.812	8.786
4	7.709	6.944	6.591	6.388	6.256	6.163	6.094	6.041	5.999	5.964
5	6.608	5.786	5.409	5.192	5.050	4.950	4.876	4.818	4.772	4.735
6	5.987	5.143	4.757	4.534	4.387	4.284	4.207	4.147	4.099	4.060
7	5.591	4.737	4.347	4.120	3.972	3.866	3.787	3.726	3.677	3.637
8	5.318	4.459	4.066	3.838	3.687	3.581	3.500	3.438	3.388	3.347
9	5.117	4.256	3.863	3.633	3.482	3.374	3.293	3.230	3.179	3.137
10	4.965	4.103	3.708	3.478	3.326	3.217	3.135	3.072	3.020	2.978
11	4.844	3.982	3.587	3.357	3.204	3.095	3.012	2.948	2.896	2.854
12	4.747	3.885	3.490	3.259	3.106	2.996	2.913	2.849	2.796	2.753
13	4.667	3.806	3.411	3.179	3.025	2.915	2.832	2.767	2.714	2.671
14	4.600	3.739	3.344	3.112	2.958	2.848	2.764	2.699	2.646	2.602
15	4.543	3.682	3.287	3.056	2.901	2.790	2.707	2.641	2.588	2.544
16	4.494	3.634	3.239	3.007	2.852	2.741	2.657	2.591	2.538	2.494
17	4.451	3.592	3.197	2.965	2.810	2.699	2.614	2.548	2.494	2.450
18	4.414	3.555	3.160	2.928	2.773	2.661	2.577	2.510	2.456	2.412
19	4.381	3.522	3.127	2.895	2.740	2.628	2.544	2.477	2.423	2.378
20	4.351	3.493	3.098	2.866	2.711	2.599	2.514	2.447	2.393	2.348
21	4.325	3.467	3.072	2.840	2.685	2.573	2.488	2.420	2.366	2.321
22	4.301	3.443	3.049	2.817	2.661	2.549	2.464	2.397	2.342	2.297
23	4.279	3.422	3.028	2.796	2.640	2.528	2.442	2.375	2.320	2.275
24	4.260	3.403	3.009	2.776	2.621	2.508	2.423	2.355	2.300	2.255
25	4.242	3.385	2.991	2.759	2.603	2.490	2.405	2.337	2.282	2.236
26	4.225	3.369	2.975	2.743	2.587	2.474	2.388	2.321	2.265	2.220
27	4.210	3.354	2.960	2.728	2.572	2.459	2.373	2.305	2.250	2.204
28	4.196	3.340	2.947	2.714	2.558	2.445	2.359	2.291	2.236	2.190
29	4.183	3.328	2.934	2.701	2.545	2.432	2.346	2.278	2.223	2.177
30	4.171	3.316	2.922	2.690	2.534	2.421	2.334	2.266	2.211	2.165
31	4.160	3.305	2.911	2.679	2.523	2.409	2.323	2.255	2.199	2.153
32	4.149	3.295	2.901	2.668	2.512	2.399	2.313	2.244	2.189	2.142
33	4.139	3.285	2.892	2.659	2.503	2.389	2.303	2.235	2.179	2.133
34	4.130	3.276	2.883	2.650	2.494	2.380	2.294	2.225	2.170	2.123
35	4.121	3.267	2.874	2.641	2.485	2.372	2.285	2.217	2.161	2.114
36	4.113	3.259	2.866	2.634	2.477	2.364	2.277	2.209	2.153	2.106
37	4.105	3.252	2.859	2.626	2.470	2.356	2.270	2.201	2.145	2.098
38	4.098	3.245	2.852	2.619	2.463	2.349	2.262	2.194	2.138	2.091
39	4.091	3.238	2.845	2.612	2.456	2.342	2.255	2.187	2.131	2.084
40	4.085	3.232	2.839	2.606	2.449	2.336	2.249	2.180	2.124	2.077
41	4.079	3.226	2.833	2.600	2.443	2.330	2.243	2.174	2.118	2.071
42	4.073	3.220	2.827	2.594	2.438	2.324	2.237	2.168	2.112	2.065
43	4.067	3.214	2.822	2.589	2.432	2.318	2.232	2.163	2.106	2.059
44	4.062	3.209	2.816	2.584	2.427	2.313	2.226	2.157	2.101	2.054
45	4.057	3.204	2.812	2.579	2.422	2.308	2.221	2.152	2.096	2.049
46	4.052	3.200	2.807	2.574	2.417	2.304	2.216	2.147	2.091	2.044
47	4.047	3.195	2.802	2.570	2.413	2.299	2.212	2.143	2.086	2.039
48	4.043	3.191	2.798	2.565	2.409	2.295	2.207	2.138	2.082	2.035
49	4.038	3.187	2.794	2.561	2.404	2.290	2.203	2.134	2.077	2.030
50	4.034	3.183	2.790	2.557	2.400	2.286	2.199	2.130	2.073	2.026
60	4.001	3.150	2.758	2.525	2.368	2.254	2.167	2.097	2.040	1.993
70	3.978	3.128	2.736	2.503	2.346	2.231	2.143	2.074	2.017	1.969
80	3.960	3.111	2.719	2.486	2.329	2.214	2.126	2.056	1.999	1.951
90	3.947	3.098	2.706	2.473	2.316	2.201	2.113	2.043	1.986	1.938
100	3.936	3.087	2.696	2.463	2.305	2.191	2.103	2.032	1.975	1.927
120	3.920	3.072	2.680	2.447	2.290	2.175	2.087	2.016	1.959	1.910
140	3.909	3.061	2.669	2.436	2.279	2.164	2.076	2.005	1.947	1.899
180	3.894	3.046	2.655	2.422	2.264	2.149	2.061	1.990	1.932	1.884
200	3.888	3.041	2.650	2.417	2.259	2.144	2.056	1.985	1.927	1.878
∞	3.841	2.996	2.605	2.372	2.214	2.099	2.010	1.938	1.880	1.831